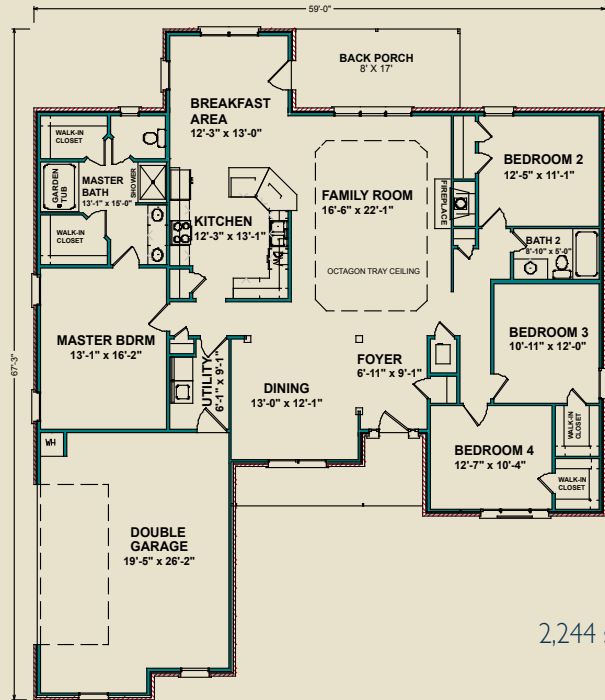




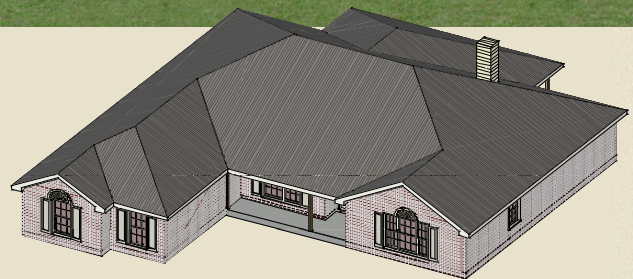
More of Everything

## Berkshire I

The Berkshire I is the perfect family plan—it's big, it's open and has four bedrooms. The plan nicely fits a formal dining room and separate breakfast room. The master suite is tucked away separate from the other three bedrooms. The master bathroom has a garden tub, dual vanities, two walk-in closets, a four-foot shower and a separate toilet room. The kitchen opens up over an angled bar into the spacious family room with a standard tray ceiling. In addition, the Berkshire I comes standard with a double garage and covered back porch. Outside, the two offset gables and oversized windows give the Berkshire I unbelievable curb appeal. The Berkshire I is attractive and functional.



2,244 sq. ft.



Photos may include optional features.

AL  
251.666.3950 | 800.489.1014

MS  
228.687.1143 | 877.410.6175

FL  
850.477.0006 | 866.775.0006

[heritagehomesfamily.com](http://heritagehomesfamily.com)