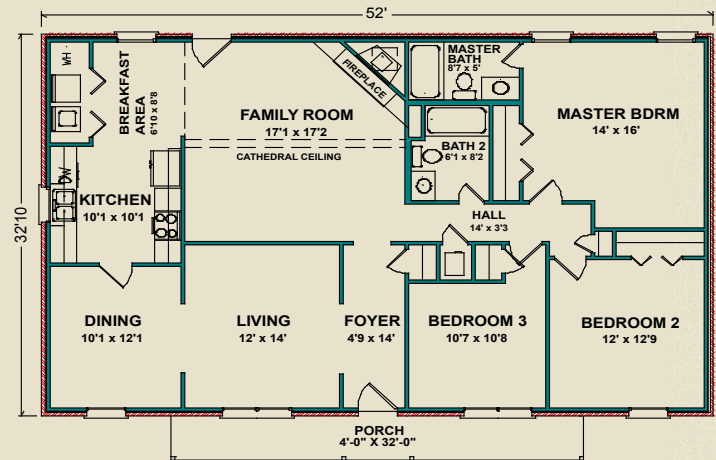


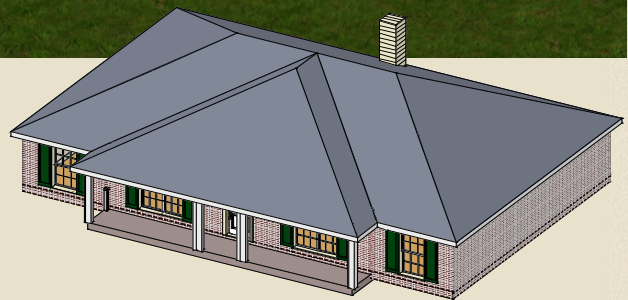
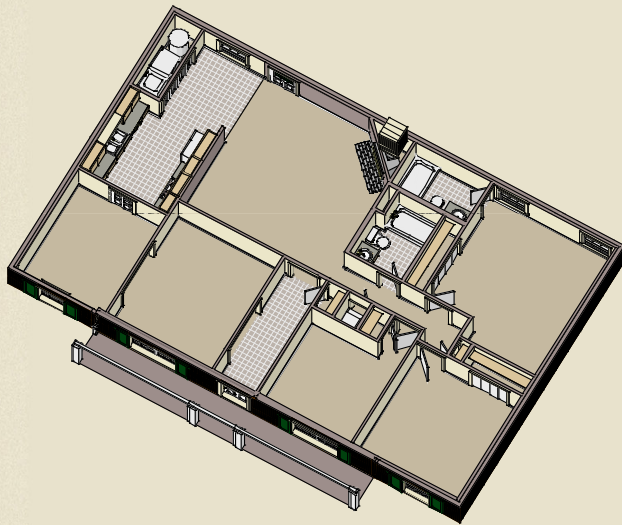


## Greensboro

The Greensboro is an elegant plan with living and dining rooms separate from the family room. The convenient doorway to the open kitchen closes to provide formal dining. The family room has a cathedral ceiling, inviting corner fireplace and access to the exterior. The breakfast area opens to the family room, and the washer/dryer are closeted behind fashionable bi-fold doors.



1,708 sq. ft.



Photos may include optional features.

AL  
251.666.3950 | 800.489.1014

MS  
228.687.1143 | 877.410.6175

FL  
850.477.0006 | 866.775.0006

[heritagehomesfamily.com](http://heritagehomesfamily.com)